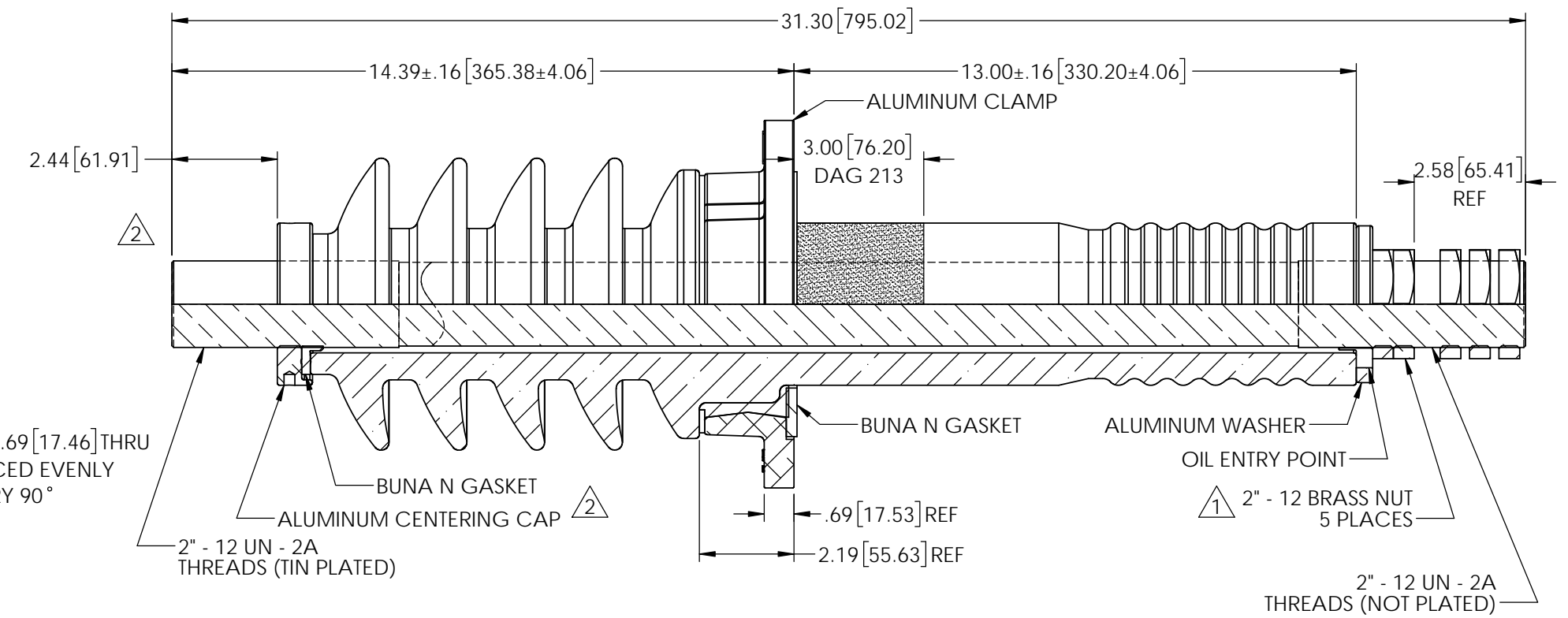
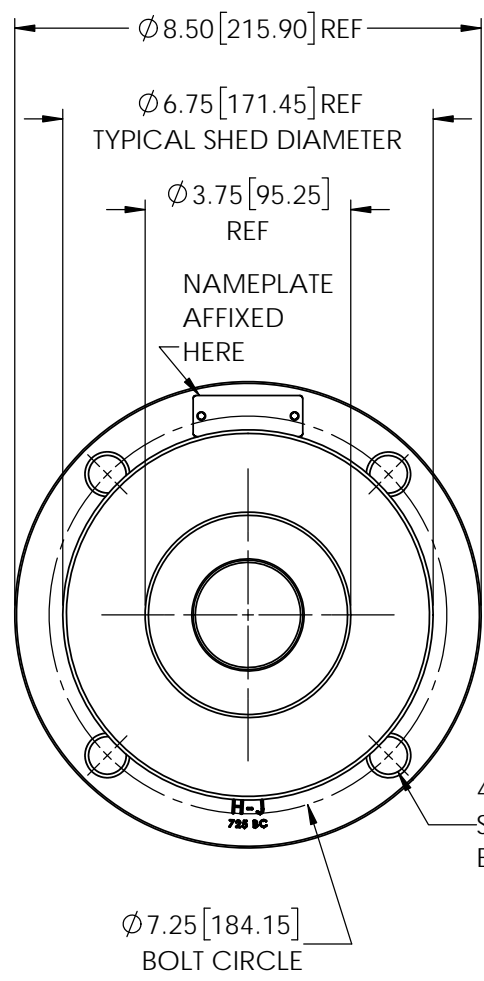


REVISIONS					
REV	DATE	FCN #	DESCRIPTION	BY	APPD
1	11/15/2012	HJ12-221	ADDED A THRID EXTRA NUT.	BS	CJT
2	4/19/2022	HJ22-034	CHANGED CAP AND GASKET; 2.44 WAS 2.5	MAD	CLS



MATERIAL:
 STUD - COPPER C11000 TIN PLATED
 CAP - ALUMINUM
 CLAMP - ALUMINUM

PORCELAIN NOTES:
 1. WET PROCESS ELECTRICAL PORCELAIN.
 2. GRAY GLAZE MUNSELL 5BG 7.0/0.4
 3. TOLERANCE ±3% WITH NOTHING LESS THAN ±.03", UNLESS OTHERWISE NOTED ON DRAWING.

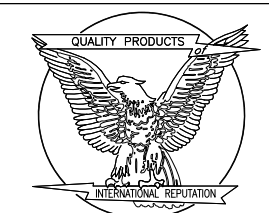
SPECIFICATIONS:

1. RATED VOLTAGE.....	23kV
2. BASIC IMPULSE LEVEL.....	150kV
3. NOMINAL CURRENT RATING.....	3142 AMPS @ 1000A/SQ.-IN.
4. STRIKE DISTANCE.....	9.63" [244.60mm]
5. CREEP DISTANCE(MIN.).....	18.50" [469.90mm]
6. APPROXIMATE WEIGHT.....	59.32 LBS

PROPRIETARY AND CONFIDENTIAL
 THE INFORMATION CONTAINED IN THIS DRAWING IS THE SOLE PROPERTY OF H-J ENTERPRISES, INC. ANY REPRODUCTION IN PART OR AS A WHOLE WITHOUT THE WRITTEN PERMISSION OF H-J ENTERPRISES, INC. IS PROHIBITED.

TOLERANCES (EXCEPT AS NOTED)

DECIMAL	.X" = ±.1" .XX" = ±.06" .XXX" = ±.03"
ANGULAR	±1°



H - J ENTERPRISES, INC.
 3010 HIGH RIDGE BLVD. HIGH RIDGE, MO. 63049 USA
 PHONE 1-636-677-3421 FAX 1-636-376-1915

23kV 150kV BIL COVER BUSHING

MATERIAL (SEE DRAWING)		
CHK'D	APP'D	DRAWING NO.
		AS1602-003
DRAWN BY	DATE	SCALE
SMM	07-29-2011	N.T.S.